

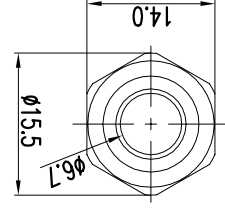
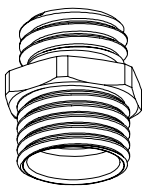
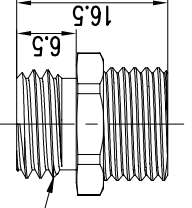
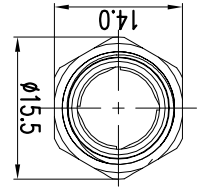
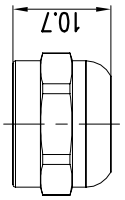
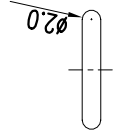
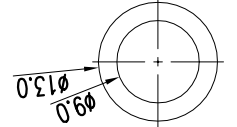
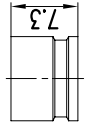
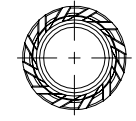
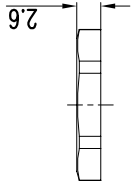
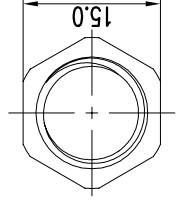
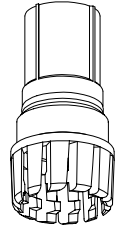
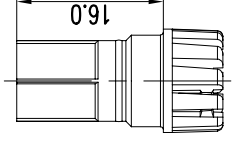
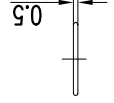
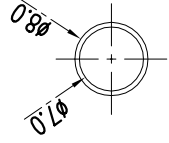
备注 Note	颜色 (色号) Color (Color Number)
------------	---------------------------------



±0.5	±0.3	±0.08	±0.05
产品型号 Item NO.	M2X1.5	制图 Designer	张纯/chun zhang
产品型号 Item NO.	M2X1.5	设计 Design	张纯/chun zhang
审核 Approved by	李小强/Roy Li	日期 Date	2021.07.30

日期 Date	2021.07.30	单位 Unit	M M	视图 View	
日期 Date	2021.07.30	比例 Scale			M1207BR
日期 Date	2021.07.30	材料 Material	金属电缆固定头 Metal Cable Gland	产品物料号 Product Material No.	
日期 Date	2021.07.30	材料 Material	金属电缆固定头 Metal Cable Gland	产品物料号 Product Material No.	

序号 Serial No.	名称 Name	材料 Material	数量 Qty	零件编号 Part No.
1	压紧螺母 Sealing Nut	Hpb59-1	1	4001020000119
2	防水圈 Seal	SI	1	/
3	夹爪 Claw	PA	1	2.230.1201.07
4	O型圈 O-Ring	EPDM	1	40150600000088
5	主体 Body	Hpb59-1	1	40040200000482
6	O型圈 O-Ring	SI	1	40150600000087
7	六角螺母 Lock Nut	Hpb59-1	1	40030200000073



1. *表示在安装过程中参数可能会发生变化;
2. 因电缆型号<材质、结构>及使用环境等因素存在差异, 安装扭力值可根据客户实际情况进行调整;
Note: 1. * indicates that parameters may change during installation.
2. Due to the difference of cable specification (material, structure) and working environment and other factors, installation torque value can be adjusted according to actual situation.

A	表面镀层 Plating	防护等级 Protection Degree	工作温度 Operating Temp	*主体安装扭力 *Torque for Body	*追帽安装扭力 *Torque for Sealing Nut	线径范围 Cable Range	名称 Name	参数 Parameter	单位 Unit
A1	镍 Nickel	IP68	-40~100 °C	2.5~3.5 N.m	1.5~2.5 N.m	3~6.5 mm	建议开孔尺寸(通孔) Recommended Opening Size (Through Hole)	φ12.2	mm