

备注	颜色(色号)	规格
----	--------	----

BEIIT

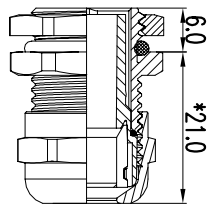
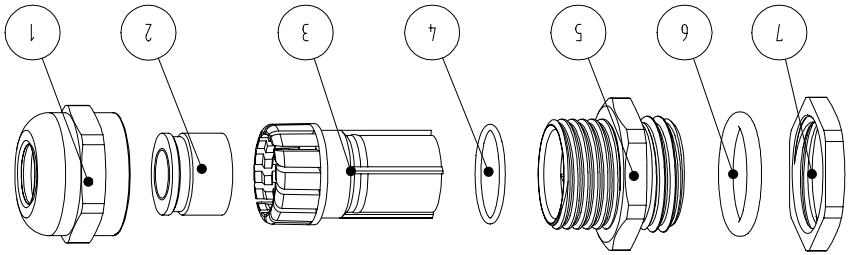
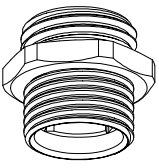
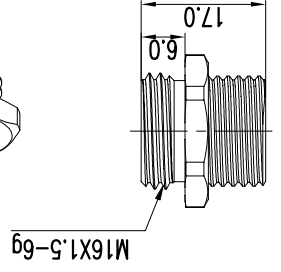
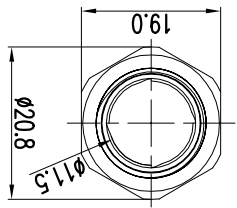
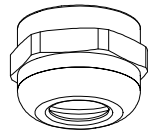
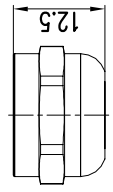
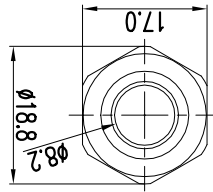
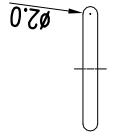
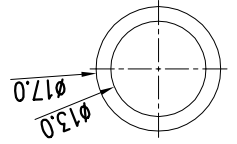
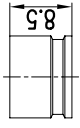
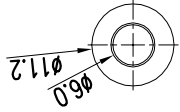
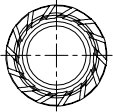
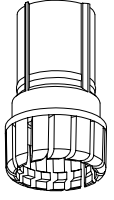
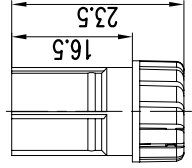
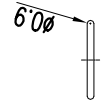
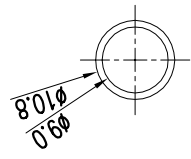
±0.5	X	±0.5	Item NO.	产品型号
±0.3	X	±0.3	Item NO.	产品型号
±0.08	X	±0.08	Item NO.	产品型号
±0.05	X	±0.05	Item NO.	产品型号

Approved by	审核	李小强/Roy Li
Designer	设计	王龙/Long Wang
Drawer	制图	王龙/Long Wang

Item Name	产品名称	金属电缆固定头
Material	材料	金属
Unit	单位	个

Date	日期	2019.10.16
Date	日期	2019.10.16
Date	日期	2019.10.16

View	视图	
Product Material No.	产品物料号	
Beisit No.	倍仕得货号	



注: 1.*表示在安装过程中参数可能会发生变化;
 2. 因电缆型号<材质、结构>及使用环境等因素存在差异, 安装扭力值可根据客户实际情况进行调整;
 Note: 1.* indicates that parameters may change during installation.
 2. Due to the difference of cable specification (material, structure) and working environment and other factors, installation torque value can be adjusted according to actual situation.

Version No.	版本号	
Content	内容	
Designer	设计	
Date	日期	
表面镀层	Plating	镍 Nickel
防护等级	Protection Degree	IP68
工作温度	Operating Temp	-40~100 °C
*主体安装扭力	*Torque for Body	4.0~5.0 N.m
*追帽安装扭力	*Torque for Sealing Nut	5.0~6.0 N.m
线径范围	Cable Range	2.0~6.0 mm
名称	Name	
参数	Parameter	
单位	Unit	

4

3

2

1

4

3

2

1

F

E

D

C

B

A

F

E

D

C

B

A