

备注  
Note

颜色 (色号)  
Color (Color Number)

**BEISIT**

±0.5  
±0.3  
±0.08  
±0.05

产品型号  
Item NO.  
制图  
Designer  
设计  
Date  
日期  
张景坤/Jingkun Zhang

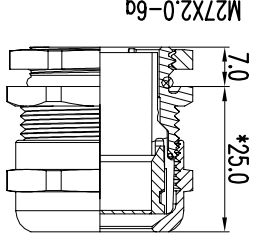
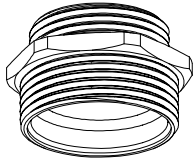
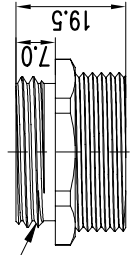
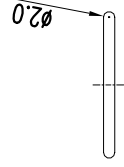
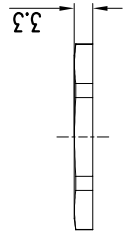
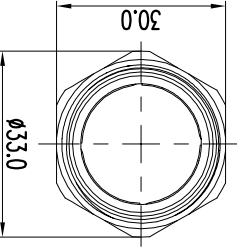
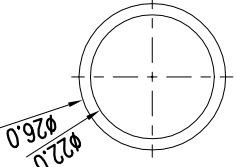
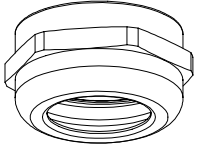
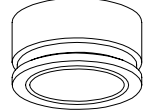
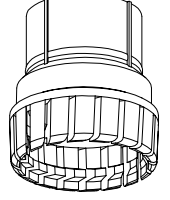
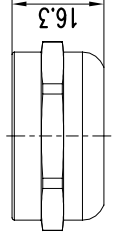
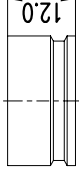
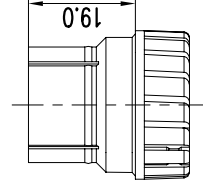
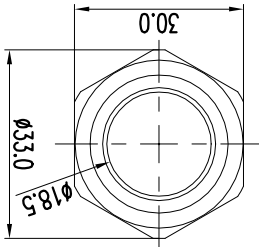
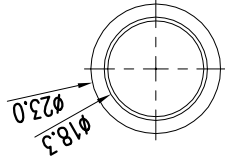
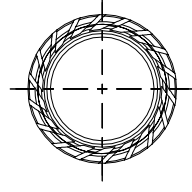
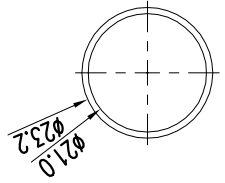
产品名称  
Item Name  
金属电缆固定头  
Metal Cable Gland

日期  
Date  
2021/6/17

材料  
Material  
单位  
Unit  
比例  
Scale

产品物料号  
Product Material No.  
备注物料号  
Beisit No.

视图  
View



注: 1.\*表示在安装过程中参数可能会发生变化;  
2. 因电缆型号<材质、结构>及使用环境等因素存在差异, 安装扭力值可根据客户实际情况进行调整;  
Note: 1.\* indicates that parameters may change during installation.  
2. Due to the difference of cable specification (material, structure) and working environment and other factors, installation torque value can be adjusted according to actual situation.

名称	单位	参数
建议开孔尺寸(通孔)	mm	ø27.2
线径范围	mm	13~18
*扭矩安装扭力	N.m	6~8
*主体安装扭力	N.m	8~10
工作温度	°C	-40~100
防护等级		IP68
表面镀层		镍 Nickel

4

3

2

1

4

3

2

1

F

E

D

C

B

A

F

E

D

C

B

A