

备注
Note

颜色 (色号)
Color (Color Number)

BEIIT

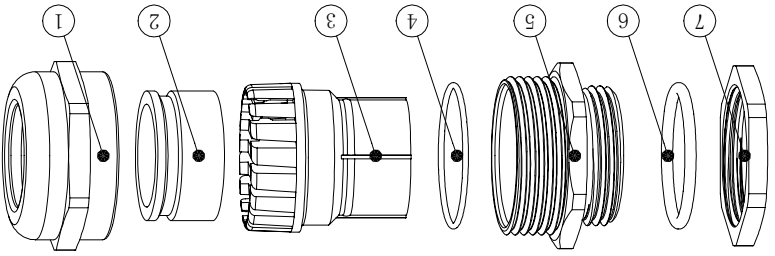
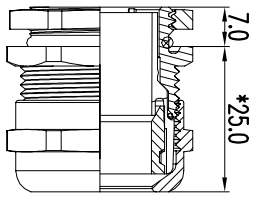
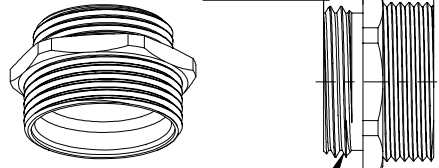
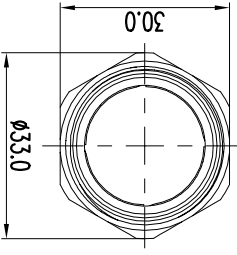
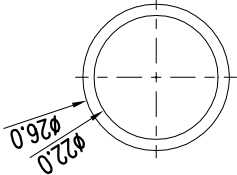
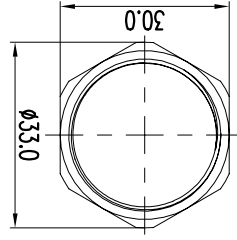
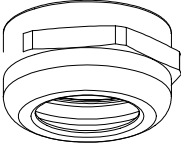
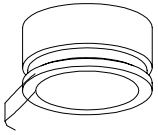
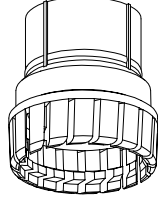
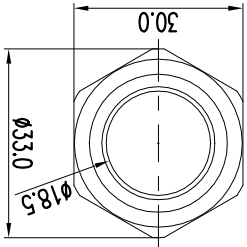
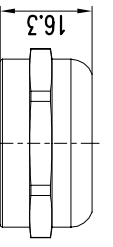
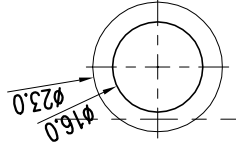
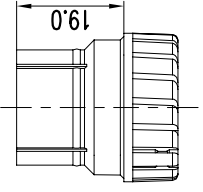
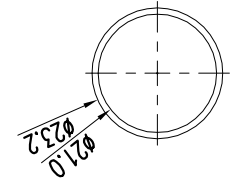
±0.5	±0.3	±0.08	±0.05
产品型号 Item NO.	制图 Drawing	设计 Designer	审核 Approved by
M27X2.0	张纯/chun zhang	张纯/chun zhang	李小强/RoyLi

日期
Date

2021.08.09	2021.08.09	2021.08.09
日期 Date	日期 Date	日期 Date

单位 Unit	材料 Material	产品物料号 Product Material No.
M M	/	/
比例 Scale	视图 View	M2716BR

序号 Serial No.	名称 Name	材料 Material	数量 Qty	零件编号 Part No.
01	压紧螺帽 Sealing Nut	Hpb59-1	1	2.110.2101.03
02	防水圈 Seal	EPDM	1	2.820.2116.00
03	夹紫爪 Claw	PA	1	2.230.2501.18
04	O型圈 O-Ring	EPDM	1	2.860.2121.11
05	主体 Body	Hpb59-1	1	2.150.2701.01
06	O型圈 O-Ring	EPDM	1	2.860.2522.20
07	六角螺母 Lock Nut	Hpb59-1	1	2.170.2701.01



注: 1.*表示在安装过程中参数可能会发生变化;
2. 因电缆型号<材质、结构>及使用环境等因素存在差异, 安装扭矩值可根据客户实际情况进行调整;
Note: 1.* indicates that parameters may change during installation.
2. Due to the difference of cable specification (material, structure) and working environment and other factors, installation torque value can be adjusted according to actual situation.

镀镍 Nickel	表面镀层 Plating	IP68	防护等级 Protection Degree	-40~100	工作温度 Operating Temp	8~10	*主体安装扭矩 *Torque for Body	6~8	*螺母安装扭矩 *Torque for Sealing Nut	9~16	线缆范围 Cable Range	27.2	建议开孔尺寸(通孔) Recommended Opening Size(Through Hole)	名称 Name	参数 Parameter	单位 Unit
--------------	-----------------	------	---------------------------	---------	------------------------	------	-----------------------------	-----	------------------------------------	------	---------------------	------	--	------------	-----------------	------------